

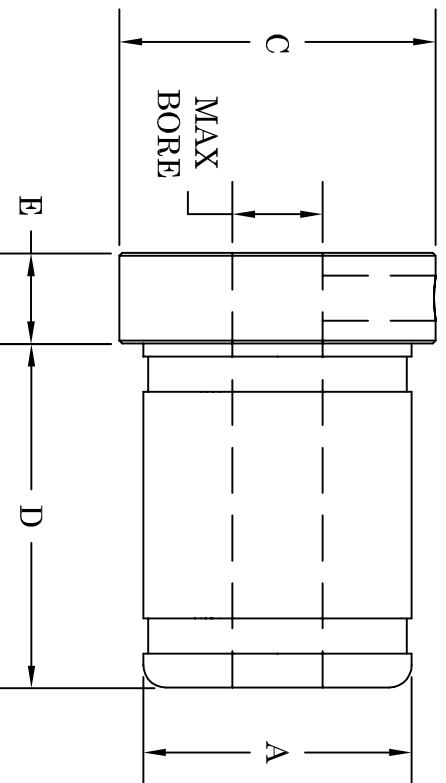
T1 TOOTH \$9.84  
PART NO. T345405

W2 CAVITY SPRING \$3.00  
PART NO. T325160

W1 CAVITY INSERT \$3.00  
PART NO. T190100

RETAINING BAND

CORE SIZE AND TYPE: 1" through 4" core I.D. for most fiber, steel tipped, and plastic cores.  
MOUNTING METHOD: Through shaft with set screw and/or keyway if required.  
BORE TOLERANCE: +.010"



CHUCK NUMBER	A	MAX BORE SIZE	C	D	E	NUMBER OF TEETH	RETAIN. BANDS NUMBER	LIST PRICE
R1-1	0.95	0.50	1.25	2.00	0.50	3	B-1	\$1.22
R1-112	1.075	0.50	1.38	2.00	0.50	3	B-112	\$1.28
R1-125	1.20	0.63	1.50	2.00	0.50	3	B-125	\$1.58
R1-150	1.45	0.75	1.75	2.00	0.50	3	B-150	\$1.84
R1-2	1.97	1.00	2.50	3.81	1.00	3	B-2	\$2.18
R1-3	2.97	2.25	3.50	3.81	1.00	3	B-3	\$2.40
R1-312	3.095	2.25	3.62	3.81	1.00	3	B-312	\$2.81
R1-325	3.20	2.25	3.75	3.81	1.00	3	B-325	\$2.81
R1-350	3.47	2.50	4.00	3.81	1.00	3	B-350	\$2.81
R1-4	3.97	3.00	4.50	3.81	1.00	5	B-4	\$3.06

# TILT-LOCK

THE ROLL HANDLING PEOPLE FOR OVER 30 YEARS.

12070 43rd St NE  
St Michael, MN 55376  
Phone: 763-497-7045  
Fax: 763-497-7046  
1-800-999-8458  
<http://www.tiltlock.com>