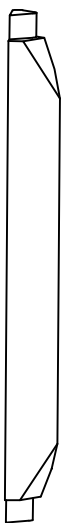
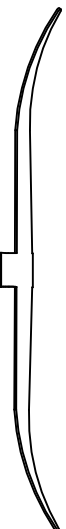


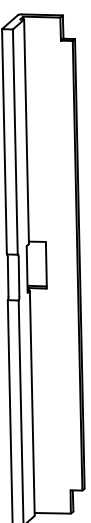
RETAINING BAND



T1 TOOTH  
PART NO. T345405

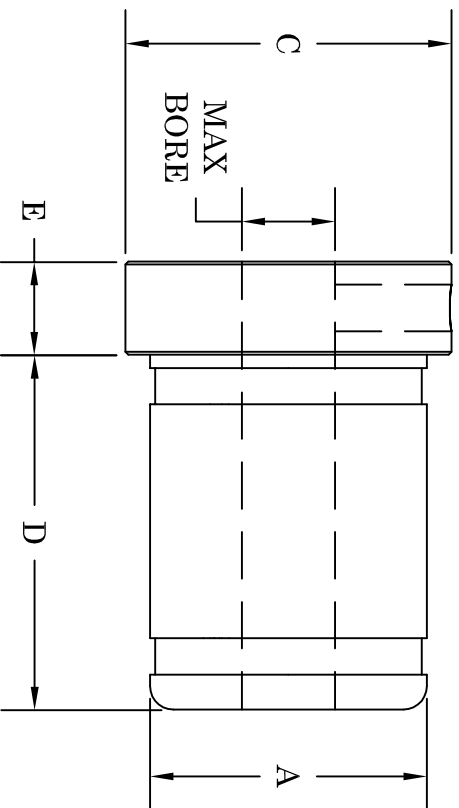


W2 CAVITY SPRING  
PART NO. T325160



W1 CAVITY INSERT  
PART NO. T190100

CORE SIZE AND TYPE: 5" through 12" core I.D. for most fiber, steel tipped, and plastic cores.  
MOUNTING METHOD: Through shaft with set screw and/or keyway if required.  
BORE TOLERANCE: +.010"



CHUCK NUMBER	A	MAX BORE SIZE	C	D	E	NUMBER OF TEETH	RETAIN BANDS NUMBER
R2-5	4.95	3.00	5.50	4.37	1.00	5	B-5
R2-6	5.95	3.00	6.50	4.37	1.00	5	B-6
R2-7	6.95	3.00	7.50	4.37	1.00	5	B-7
R2-8	7.95	4.00	8.50	5.00	1.00	5	B-8
R2-9	8.95	4.00	9.50	5.00	1.00	5	B-9
R2-10	9.95	4.00	10.50	5.00	.37	5	B-10
R2-11	10.95	4.00	11.50	5.00	.37	7	B-11
R2-12	11.95	4.00	12.50	5.00	.37	7	B-12

\*R2-10 through R2-12 have a 1.50" projection hub with a setscrew to fasten the chuck to the shaft.

# TITLOCK

THE ROLL HANDLING PEOPLE FOR OVER 30 YEARS.

12070 43rd St NE  
St Michael, MN 55376  
Phone: 763-497-7045  
Fax: 763-497-7046  
1-800-999-8458  
<http://www.titlock.com>