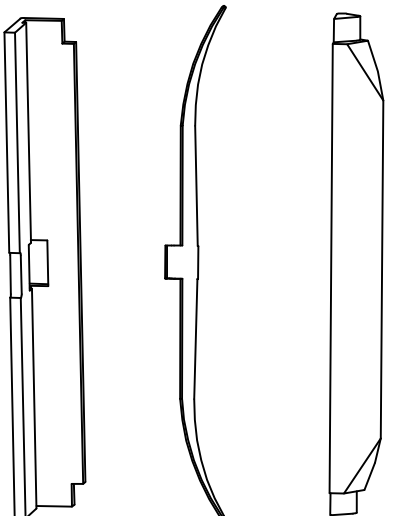


RETAINING BAND

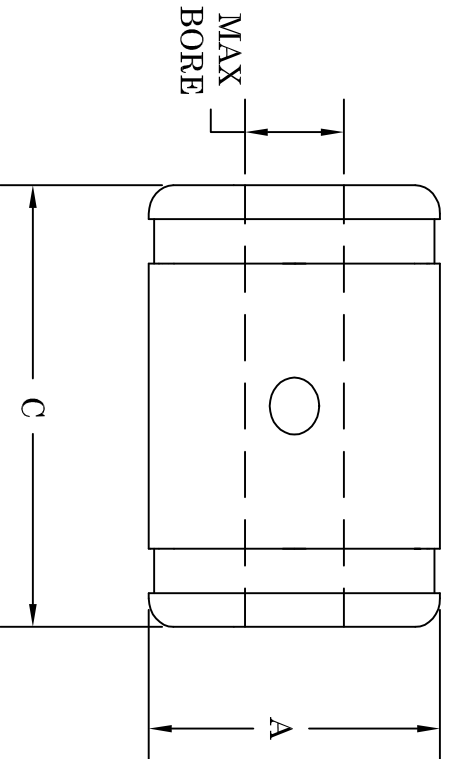


T1 TOOTH \$9.84  
PART NO. T345405

W2 CAVITY SPRING \$3.00  
PART NO. T325160

W1 CAVITY INSERT \$3.00  
PART NO. T190100

CORE SIZE AND TYPE: 5" through 12" core I.D. for most fiber, steel tipped, and plastic cores.  
MOUNTING METHOD: Through shaft with set screw and/or keyway if required.  
BORE TOLERANCE: +.010"



| CHUCK NUMBER | A     | MAX BORE SIZE | C    | NUMBER OF TEETH | RETAIN. BANDS NUMBER | LIST PRICE |
|--------------|-------|---------------|------|-----------------|----------------------|------------|
| R4-5         | 4.95  | 3.00          | 5.62 | 5               | B-5                  | \$3.37     |
| R4-6         | 5.95  | 3.00          | 5.62 | 5               | B-6                  | \$4.44     |
| R4-7         | 6.95  | 3.00          | 5.62 | 5               | B-7                  | \$4.99     |
| R4-8         | 7.95  | 4.00          | 5.62 | 5               | B-8                  | \$5.92     |
| R4-9         | 8.95  | 4.00          | 5.62 | 5               | B-9                  | \$6.17     |
| R4-10        | 9.95  | 4.00          | 5.62 | 5               | B-10                 | \$7.29     |
| R4-11        | 10.95 | 4.00          | 5.62 | 7               | B-11                 | \$8.06     |
| R4-12        | 11.95 | 4.00          | 5.62 | 7               | B-12                 | \$8.57     |

# TILT-LOCK

THE ROLL HANDLING PEOPLE FOR OVER 30 YEARS.

12070 43rd St NE  
St Michael, MN 55376  
Phone: 763-497-7045  
Fax: 763-497-7046  
1-800-999-8458  
<http://www.tiltlock.com>