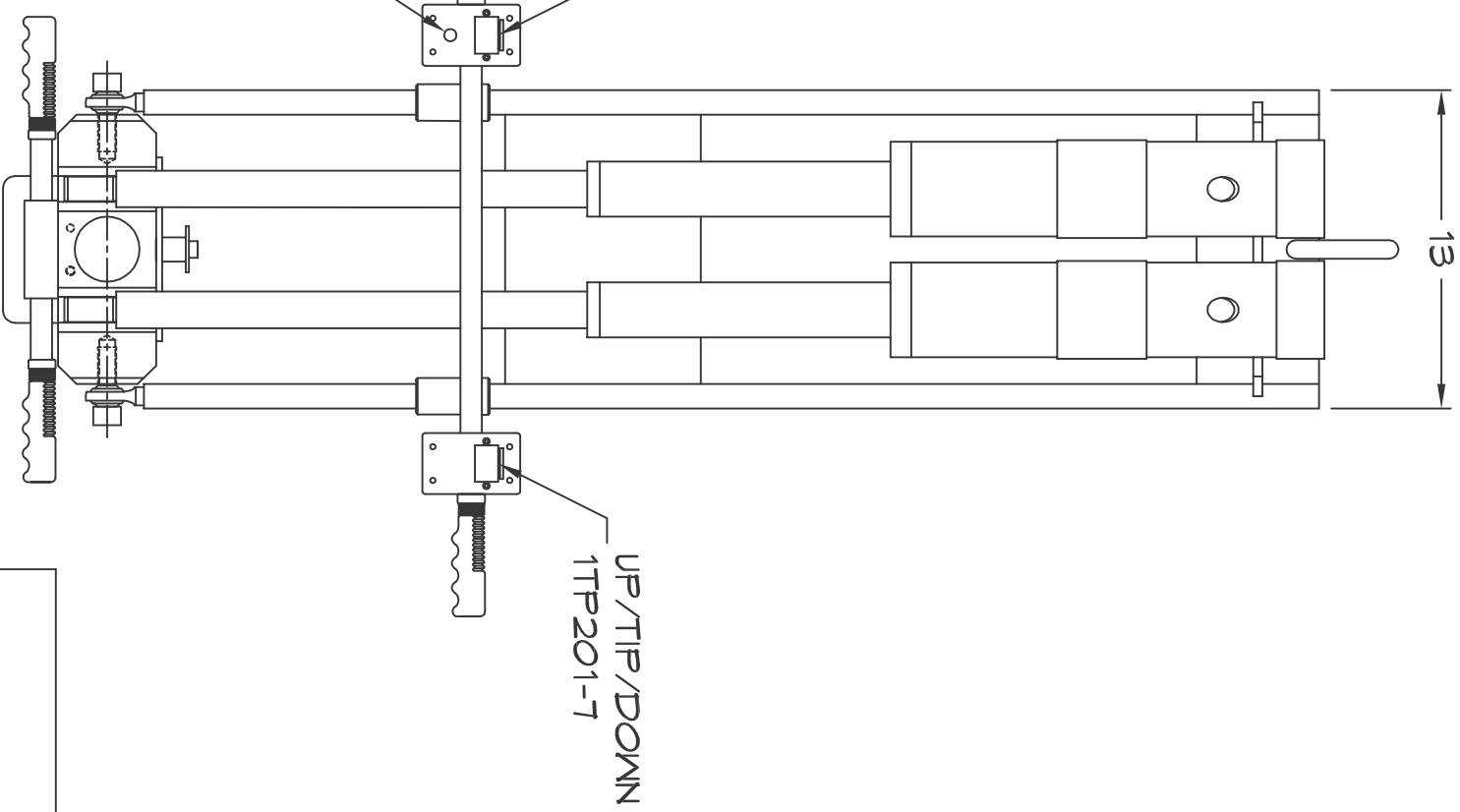


UP/HOIST/DOWN  
2TP201-7

INTERLOCK  
2X894



**L3-3 ELECTRIC TIP LIFT SPECIFICATIONS**

- 1.) POWER REQ: 110VOLT SINGLE PHASE 15 AMPS
- 2.) ROTATION: 90 DEGREES
- 3.) HOIST HOOK MUST HAVE SAFETY LATCH
- 4.) CONTROL WIRING TO HOIST BY OWNER

ROLL WIDTH	CAP. (LBS.)
10"	2000
20"	2000
30"	2000
40"	1650
50"	1350
60"	1150
70"	1000

TOLERANCES UNLESS SPECIFIED  
MACHINED .XXX - ±.005"  
XX - ±.01"  
X - ±.05"  
FRACTIONS - ±1/16"  
ANGULAR - ±3°

NOTICE TO PERSONS RECEIVING THIS DRAWING AND/OR TECHNICAL INFORMATION: TILT-LOCK CLAIMS PROPRIETARY RIGHTS TO THE MATERIAL DISCLOSED THEREON. THIS DRAWING AND/OR TECHNICAL INFORMATION IS ISSUED IN CONFIDENCE FOR ENGINEERING INFORMATION ONLY AND MAY NOT BE REPRODUCED OR USED TO MANUFACTURE ANYTHING SHOWN OR REFERRED TO HEREON WITHOUT DIRECT WRITTEN PERMISSION FROM TILT-LOCK TO THE USER.

TILT-LOCK IS NOT RESPONSIBLE FOR THE STRENGTH OF BUILDING MEMBERS FURNISHED BY OTHERS.



**TILT-LOCK**  
12070 43RD STREET NE  
ST. MICHAEL, MN 55376  
PH: 763-497-7045  
FAX: 763-497-7046

TITLE: L3-3 ELECTRIC (MTR) (HMC) WITH  
INTERLOCK 115-1-60

DRAWN BY: **TGK** DATE: 10/29/03 SCALE: NONE WEIGHT: X  
RELEASED BY: DMS TA31403C SIZE: B REV.

CHANGES

REV DATE BY