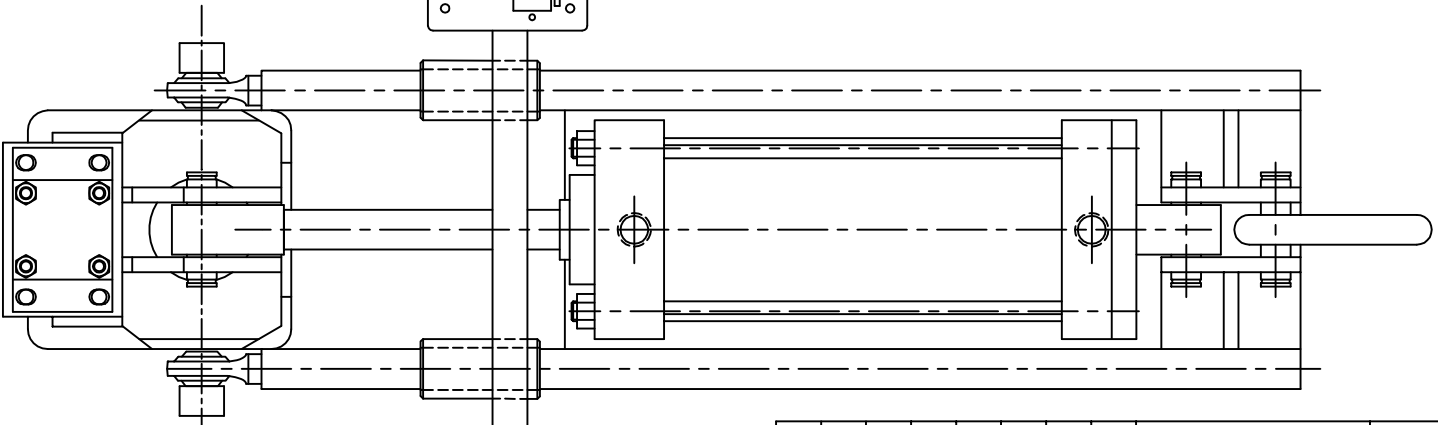
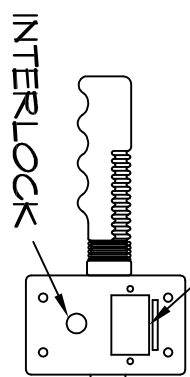


CLEAR PLASTIC SHIELD
SURROUNDING CYLINDER

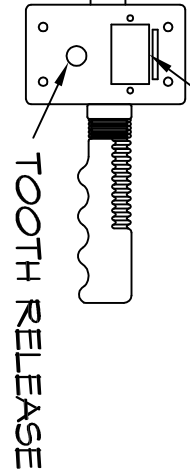
LEFT CONTROLS

HOIST RAISE
HOIST LOWER



RIGHT CONTROLS

TIP UP
TIP DOWN



LS1-3 AIR TIP LIFT SPECIFICATIONS

- 1.) OPERATING AIR PRESSURE: 90 PSI
- 2.) ROTATION: 90 DEGREES
- 3.) FILTER, REGULATOR, LUBRICATOR BY OWNER
- 4.) HOIST HOOK MUST HAVE SAFETY LATCH
- 5.) UNIT FURNISHED WITH AIR QUICK COUPLING
- 6.) CONTROL PIPING TO HOIST BY OWNER

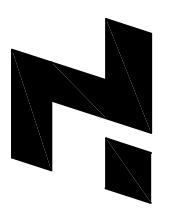
ROLL WIDTH	CAP. (LBS.)
10"	1250
20"	770
30"	550
40"	430
50"	350
60"	300
70"	260

TOLERANCES UNLESS SPECIFIED

MACHINED .XXX	- ±.005"
.XX	- ±.01"
X	- ±.05"
FRACTIONS	- ±1/16"
ANGULAR	- ±.3°

NOTICE TO PERSONS RECEIVING THIS DRAWING AND/OR TECHNICAL INFORMATION: TILT-LOCK CLAMS PROPRIETARY RIGHTS TO THE MATERIAL DISCLOSED THEREON. THIS DRAWING AND/OR TECHNICAL INFORMATION IS ISSUED IN CONFIDENCE FOR ENGINEERING INFORMATION ONLY AND MAY NOT BE REPRODUCED OR USED TO MANUFACTURE ANYTHING SHOWN OR REFERRED TO HEREON WITHOUT DIRECT WRITTEN PERMISSION FROM TILT-LOCK TO THE USER.

TILT-LOCK IS NOT RESPONSIBLE FOR THE STRENGTH OF BUILDING MEMBERS FURNISHED BY OTHERS.



TILT-LOCK
12070 43RD STREET NE
ST. MICHAEL, MN 55376
PH: 763-497-7045
FAX: 763-497-7046

TITLE:
LS1-3 AIR TIP LIFT P.T.R H.M.C

DRAWN BY: TGK	DATE: 2/11/02	SCALE: NONE	WEIGHT: X
RELEASED BY:	DWG.:	TA32102C	
		SIZE:	REV.:
		B	