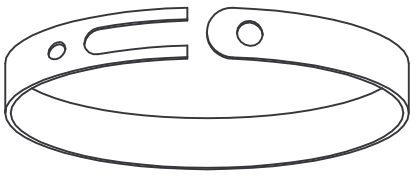
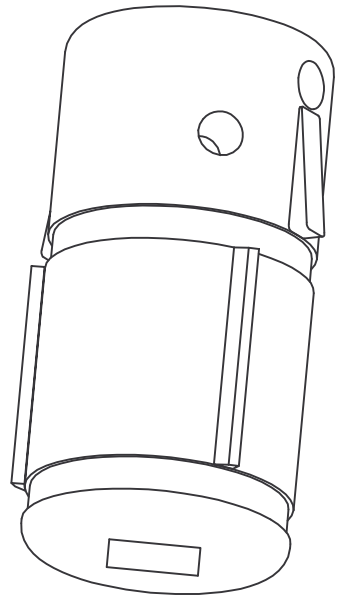




DL-2 SIX PIECE STOP ARM ASSEMBLY
PART NO. TAI1599



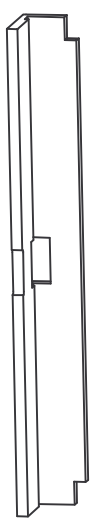
RETAINING BAND



T1 TOOTH
PART NO. T345405

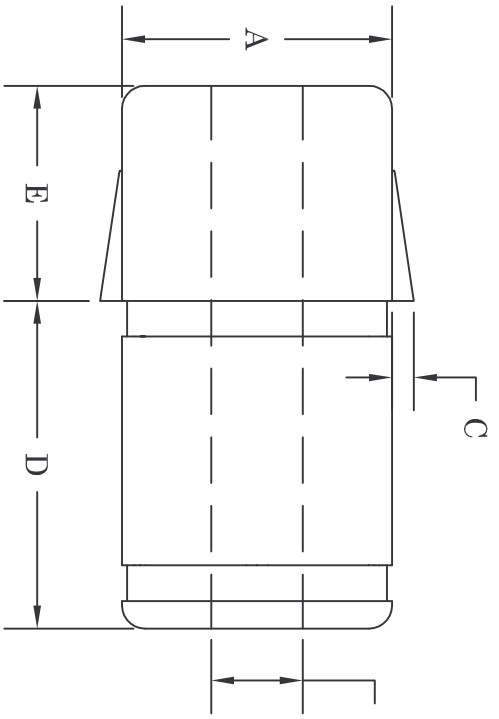


W2 CAVITY SPRING
PART NO. T325160



W1 CAVITY INSERT
PART NO. T190100

CORE SIZE AND TYPE: 3" through 6" core I.D. for most fiber, steel tipped, and plastic cores.
MOUNTING METHOD: Through shaft with set screw and/or keyway if required.
BORE TOLERANCE: +.010"



CHUCK NUMBER	A	MAX BORE SIZE	C	D	E	NUMBER OF TEETH	RETAIN. BANDS NUMBER
X5-3	2.95	1.50	0.25	3.59	2.34	3	B-3
X5-312	3.075	1.50	0.25	3.59	2.34	3	B-312
X5-325	3.20	1.50	0.25	3.59	2.34	3	B-325
X5-350	3.45	1.50	0.25	3.59	2.34	3	B-350
X5-4	3.95	1.50	0.25	3.59	2.34	3	B-4
X5-5	4.95	1.50	0.25	4.00	2.34	5	B-5
X5-6	5.95	1.50	0.25	4.00	2.34	5	B-6

JIT-LOCK

THE ROLL HANDLING PEOPLE FOR OVER 30 YEARS.

12070 43rd St NE
St Michael, MN 55376
Phone: 763-497-7045
Fax: 763-497-7046
1-800-999-8458
<http://www.jitlock.com>